



BeyondTrust

Security Scanner Deployment Package Wizard Guide

Powered By Retina

Table of Contents

BeyondTrust Security Scanner Deployment Wizard Package	3
Package Command Line Options	8

BeyondTrust Security Scanner Deployment Wizard Package

This guide provides information on using the BeyondTrust Security Scanner Deployment Package Wizard to create deployment packages. Using the wizard, you can create deployment packages for either the Host Security Scanner or Network Security Scanner installers.

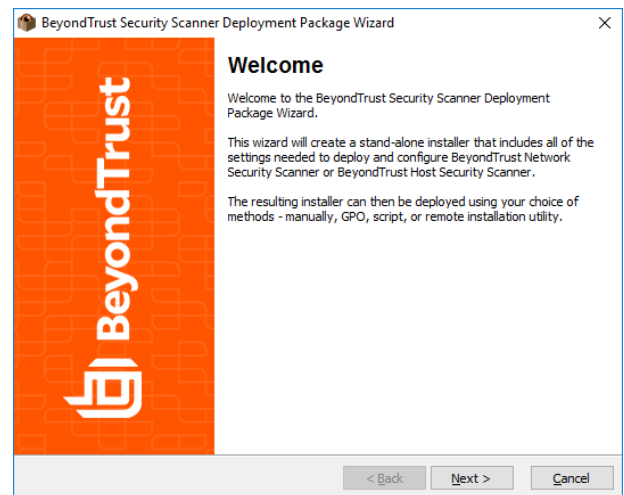
You can download the Deployment Package Wizard from the customer portal at www.beyondtrust.com/support.

- You can use the Deployment Package Wizard to create a standalone installer that includes the settings needed to silently deploy and configure Security Scanner.
- You can create an executable or Windows Installer MSI package. The installer can be deployed:
 - Manually
 - Using Group Policy
 - Running a script
 - Using a remote installation utility

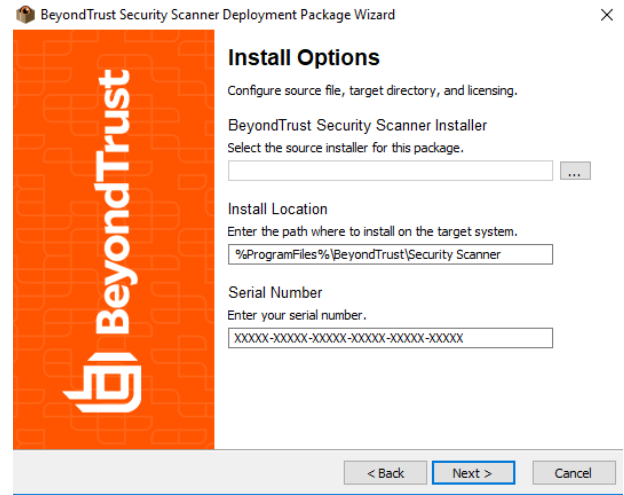
In order to use the Deployment Package Wizard, Host Security Scanner or Network Security Scanner version 6.0.0 or later are required.

To create a deployment package, follow the steps below:

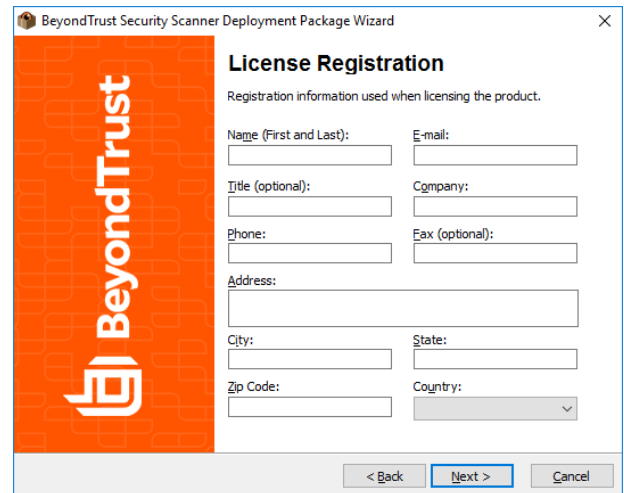
1. Launch the **BeyondTrustSecurityScannerDeploymentWizard.exe**.
2. Click **Next** on the **Welcome** page.



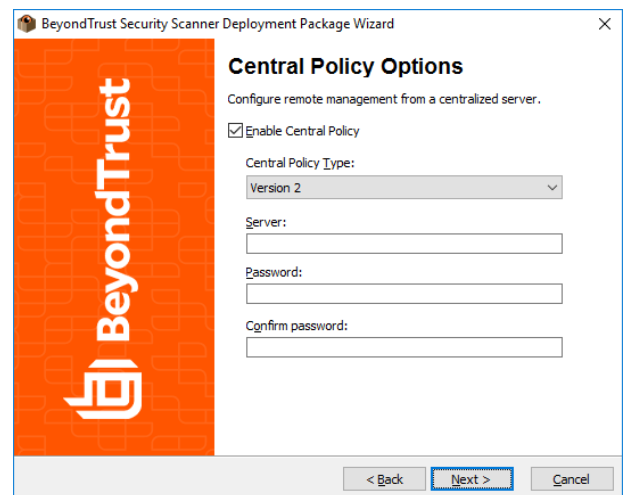
3. Set the path to the source scanner installer. This is the installer that the deployment wizard uses to create the deployment package. Download the network or host installer from the customer portal at www.beyondtrust.com/support.
4. Enter the installation path on the target system. The default path is **%ProgramFiles%\BeyondTrust\Security Scanner**.
5. Enter the serial number matching the installer you are using for the package.



6. Enter your license information.



7. Configure your **Central Policy Options**.
 - **Central Policy Type:**
 - **Version 1** uses the BeyondTrust proprietary REM3 protocol over TCP 10001.
 - **Version 2 (Recommended)** uses HTTPS over port 443.
 - **Server:** Enter the BeyondInsight server name or IP address.
 - **Password:** Enter the **Central Policy** password.



IMPORTANT!

This is required for BeyondInsight central management.



Note: The agent name displayed in BeyondInsight automatically populates with the hostname of the system where the scanner is installed.

8. Configure **Event Options**. This is required if you want to send scan results to BeyondInsight.

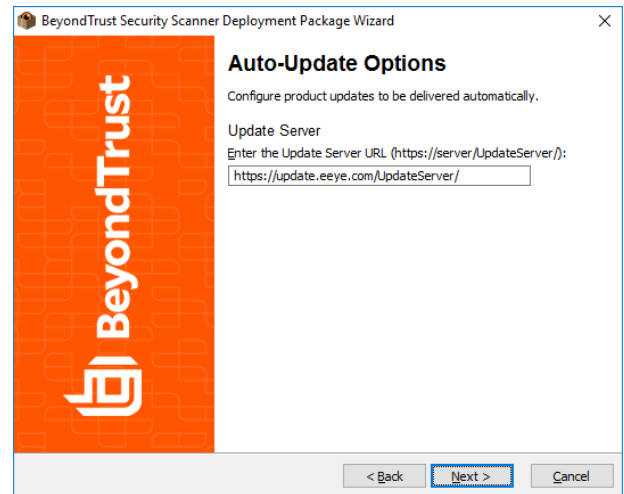
- **Server:** Enter the server name or IP address of either the BeyondInsight server or BeyondInsight Event Collector. By default, the server and event collector use port 21690.
- **Workgroup Name:** Enter a **Workgroup Name**. A workgroup name can be used as a unique identifier in a multi-tenant environment or an environment where duplicate assets exist.

9. Configure **Certificate Settings**. These settings are only available if you have selected **Enable Event Delivery**.

- **Select certificate file to install:** Utilizing the certificate generated by BeyondInsight is the most common method.
 - Obtain a copy of the **EmsClientCert.pfx** from your BeyondInsight server. For more information on generating EmsClientCert.pfx, please see **Appendix A** in the *BeyondInsight Installation Guide*.
 - **Certificate Password:** Enter the certificate password.
- **User certificate already installed on target:** This method allows you to provide your own certificate that is pre-installed on the target system.
 - **Certificate Store:** The store in which the certificate is installed. Use the dropdown to select a store name.
 - **Certificate Name:** The name of the certificate to be used.

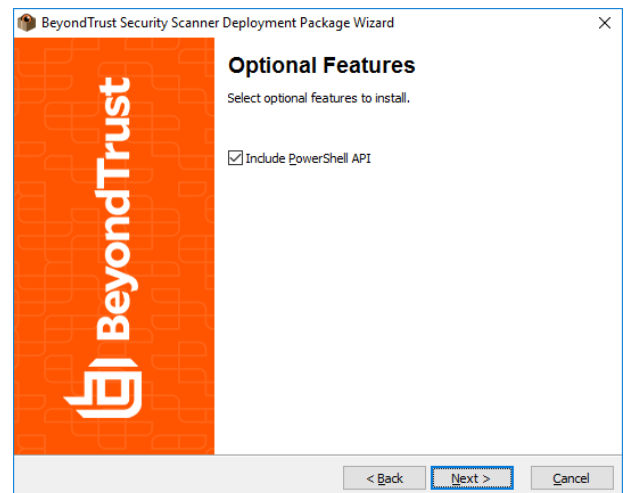
10. Configure your **Auto-Update Options**. Enter the URL from which the scanner will retrieve updates.

- **Update Server:** You can use the URL of an internal Enterprise Update Server, or you can choose to get updates directly from BeyondTrust:
<https://update.eeye.com/UpdateServer/>.



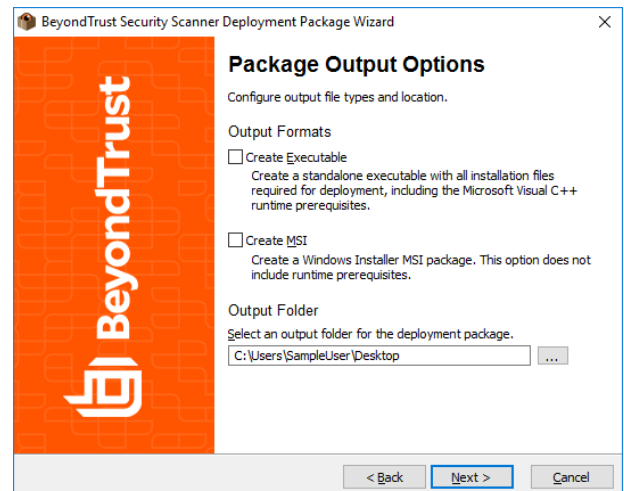
11. Configure other **Optional Features**. These settings allow you to enable or disable components.

- **Include PowerShell API:** Install the PowerShell API and associated cmdlets. This API allows for the configuration and management of the scanner.

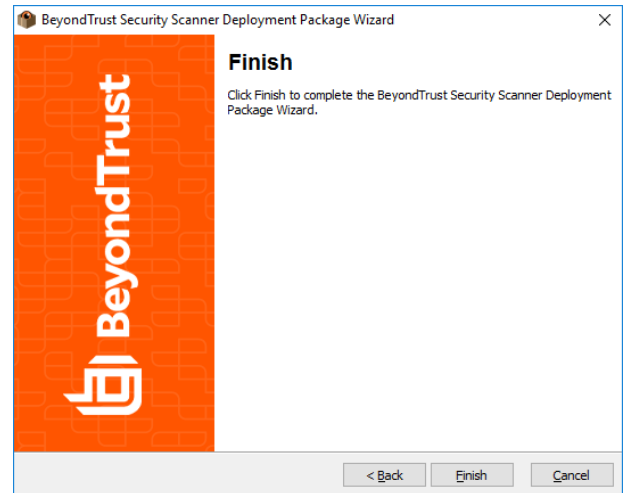


12. Select the Package Output Options. Choose the output format.

- **Create Executable:** Creates an installer that includes all installation files required for deployment, including the Microsoft Visual C++ runtime prerequisites.
- **Create MSI:** Creates a Windows Installer MSI package. This option does not include runtime prerequisites. You must install the Microsoft 2008 and 2017 Visual C++ (x86) redistributable before you run the .msi on the target system. Download the redistributables from Microsoft:
 - **Microsoft Visual C++ 2008 Redistributable Package (x86)**
 - <https://www.microsoft.com/>
 - **Microsoft Visual C++ 2017 Redistributable Package (x86)**
 - <https://www.microsoft.com/>
- **Output Folder:** Choose where the .exe or .msi package will be saved.



13. Click **Finish** to complete the wizard. After you click **Finish**, a message appears indicating the package was created.



The output file name is in the following format:

```
BeyondTrust<InstallType>SecurityScanner_<Ver>_<Lang>_DeploymentPackage.<Extension>  
InstallType = Host or Network  
Ver = 6.6.0 (or similar)  
Lang = EN or JP  
Extension = MSI or EXE
```

Example

```
BeyondTrustHostSecurityScanner_6.6.0_EN_DeploymentPackage.exe
```

Package Command Line Options

After the packages are created, you can silently install the .exe or .msi using the following command line options:

.exe command line:

```
BeyondTrustHostSecurityScanner_6.6.0_EN_DeploymentPackage.exe /quiet
```

.msi command line:

```
msiexec /I BeyondTrustHostSecurityScanner_6.6.0_EN_DeploymentPackage.msi /qn
```

In addition, you can override certain settings using the command line.

```
CPSEVER=<Central Policy Server>  
CPPASSWORD=<Central Policy Password>  
EVENTSERVER=<Event Server>  
EVENTPORT=<Event Server Port>  
EVENTNAME=<Event Workgroup Name>  
EVENTDESC=<Event Workgroup Description>  
EVENTLOC=<Event Workgroup Location>
```

Example:

```
BeyondTrustHostSecurityScanner_6.6.0_EN_DeploymentPackage.exe CPSEVER="MyServerName"
```



Note: You must enable the corresponding option in order to override the setting. You cannot use the command line to enable an option disabled during package creation.