

# PowerBroker Password Safe

## Version 6.2

### New and Updated Features

BeyondTrust [PowerBroker Password Safe](#) automates privileged password and privileged session management, providing secure access control, auditing, alerting and recording for any privileged account – from local or domain shared administrator, to a user’s personal admin account, to service, operating system, network device, database (A2DB) and application (A2A) accounts – even SSH keys, cloud and social media accounts. By improving the accountability and control over privileged access IT organizations can reduce security risks and achieve compliance objectives. With Password Safe, customers can:

- Secure and control privileged passwords to close critical security gaps and reduce risk
- Monitor, audit and report on activity to achieve compliance requirements
- Automate password request and approval processes to simplify administration and improve security
- Gain greater insights on their security environments through integration with the BeyondInsight IT Risk Management platform

Password Safe version 6.2 improves on key features and capabilities in session management, adaptive workflow, and password management with unmatched levels of security, scalability and control.

## New Feature Highlights

### Quickly Connect to RDP Sessions with DirectConnect (Available Jan 2017)

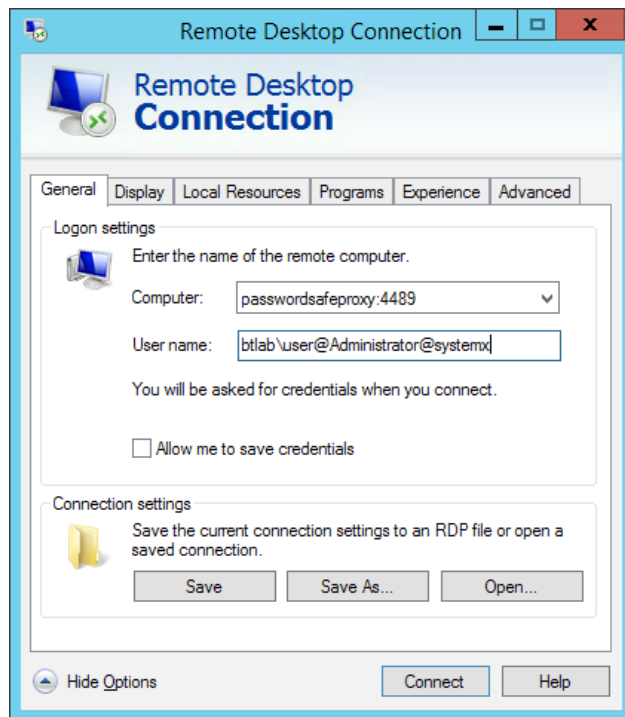
Connecting to a webpage to request access to an RDP session is an unnecessary step for administrators that primarily work with desktop connection managers.

Password Safe version 6.2 introduces a new method of connecting to RDP sessions without having to log onto the Password Safe portal. Connection strings may be defined and saved as shortcuts on the desktop, or by using popular desktop connection managers such as Microsoft RDP Manager, or Devolutions Remote Desktop Manager.

To connect, the user builds a connection string with the following syntax (for example):

`btlab\user@Administrator@systemx` in the User name field

`passwordsafeproxy:port` in the Computer field



In this example, when passing the connection string to the Password Safe proxy, the user will be prompted for the password of his or her own account (btlab\user), then directly logged onto an RDP session running as Administrator on systemx.

No agents need to be installed on the hosts, and connection to any RDP system is supported.

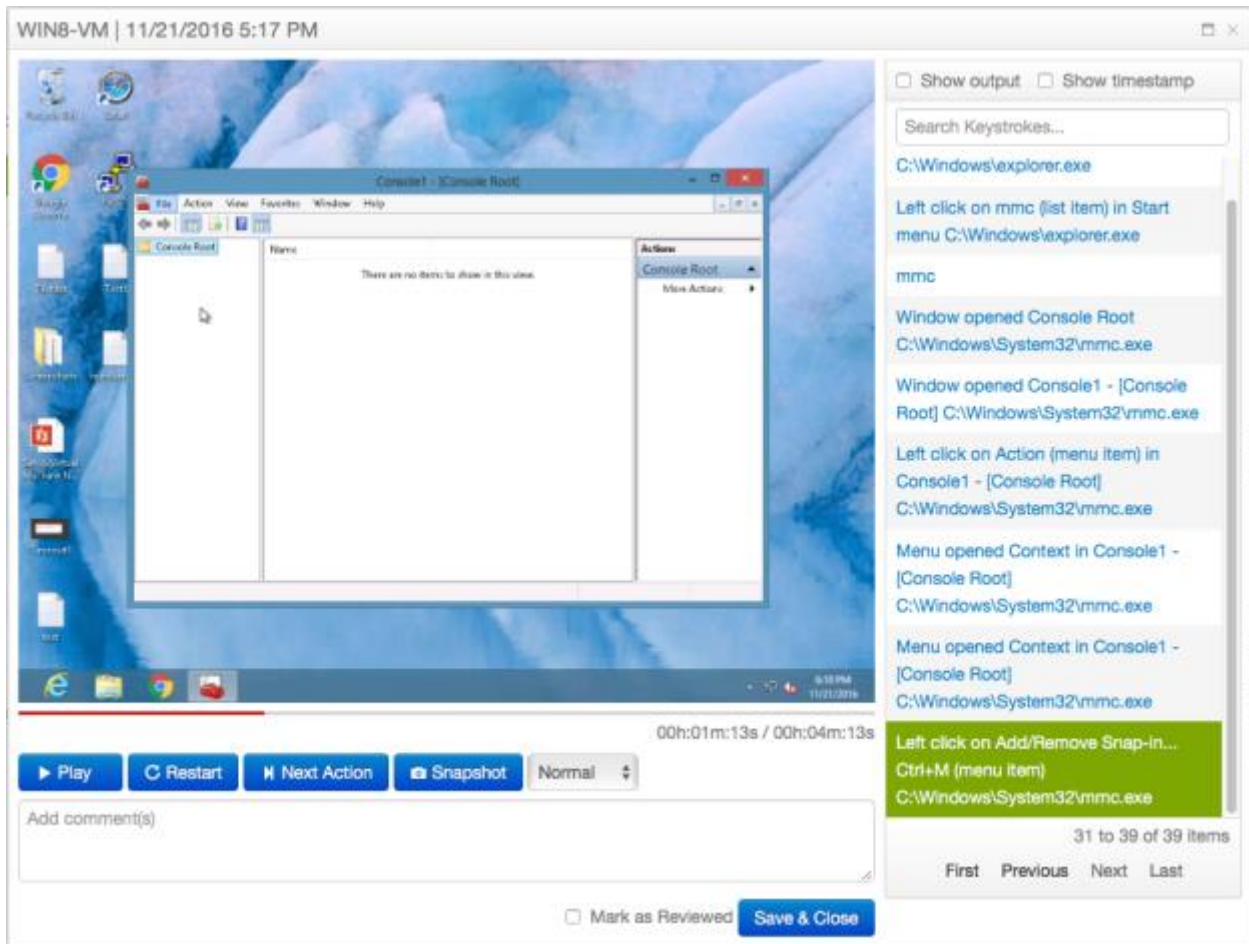
Password Safe RDP DirectConnect allows sessions to be easily established via your existing desktop tools without having to initiate via a web interface.

Note: Password Safe RDP DirectConnect will be available January 2017.

## Capture Every User Action with RDP Enhanced Session Audit

Often times, an RDP session can consist entirely of clicking on controls, with no keystrokes audited. When recording keystrokes alone, this leads to an audit deficit.

Available for both RDP and RemoteApp applications, the new enhanced session audit records every click within the interface to ensure that every action is accounted for.



All actions are indexed and searchable, along with any keystrokes recorded.

Clicking on an action will immediately jump you to that index point of the recording. Users now have the ability to display time stamps, as well as toggle between keystroke only display or keystroke plus actions.

## Improved User Interface

Password Safe Accounts Requests Admin Session requestor ▾

### Account Search

- Find an account by using the Global Search or the grid filters [v]
- Click the star ☆ next to any system/account to add it to your Favorites.

★ Favorites Recently Used All Systems Databases Domain Linked Accounts Applications Cloud

★ System ▾	⚡	Direct...	Account	Status	Platform	Application	Workgroup
★ WIN8-VM	⚡		RCUser1	1 of 1Available	Windows		
★ WIN8-VM	⚡		RCUser1	1 of 1Available	Windows	Chrome	
★ WIN8-VM	⚡		RCUser3	1 of 1Available	Windows		
★ WIN8-VM	⚡		RCUser2	1 of 1Available	Windows		
★ WIN2008R2_IE9	⚡		RCUser1	1 of 1Available	Windows		
★ WIN2008R2_IE9	⚡		RCUser3	1 of 1Available	Windows		
★ WIN2008R2_IE9	⚡		RCUser2	1 of 1Available	Windows		
★ 010.200.031.158	⚡	halldom.lo...	rcuser1req	Unlimited	Linux	SSH-FA(158)	
★ 010.200.031.158	⚡	halldom.lo...	rcuser1req	Unlimited	Linux	SSH-NFA	
★ 010.200.031.158	⚡		rcoper	1 of 1Available	Linux		
★ 010.200.031.158	⚡		rcoper	1 of 1Available	Linux	SSH-FA(158)	
★ 010.200.031.158	⚡		rcoper	1 of 1Available	Linux	SSH-NFA	

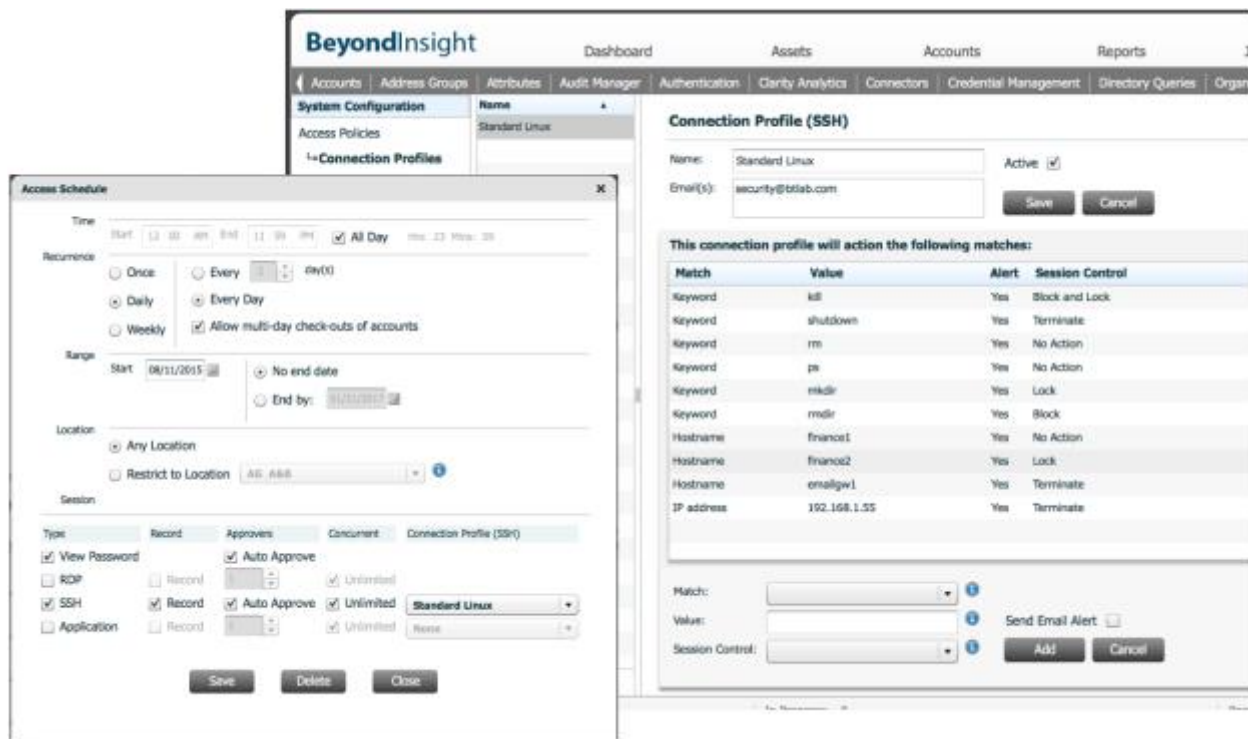
1

- **Status Column** – displays current usage of the managed account
- **Favorites** – contains any account marked as a favorite for fast, easy access
- **Account Description (with Search)** – any account with a description will be displayed with an information icon that can be used to show the contents
- **Workgroup Column** – contains the workgroup that the managed system/account is a member of
- **Most Recently Used** – displays the last 60 accounts used for quick access
- **Improved Filtering (?)** – Each view will initially be empty for improved performance. Search and filtering controls will display managed accounts
- **OneClick Conditional Display** – If OneClick is not available due to access policy, the button will be grayed out and non-selectable

- **Improved Application Filtering** – new filtering options on the application screen allow conditional display of applications against linked systems

## Expand Access Control Capabilities With SSH Connection Profiles

PowerBroker Password Safe now enables real-time email alerts on user activity, as well as command block, lock, and termination of SSH sessions.



The screenshot displays the BeyondInsight interface with two windows open. The 'Access Schedule' window on the left shows configuration for an SSH session, including recurrence (Daily), range (Start: 08/11/2015), location (Any Location), and session type (SSH). The 'Connection Profile (SSH)' window on the right shows a profile named 'Standard Linux' with an email address 'security@ttlab.com'. Below this, a table lists matches and their corresponding actions:

Match	Value	Alert	Session Control
Keyword	kill	Yes	Block and Lock
Keyword	shutdown	Yes	Terminate
Keyword	rm	Yes	No Action
Keyword	ps	Yes	No Action
Keyword	mkdir	Yes	Lock
Keyword	rmdir	Yes	Block
Hostname	finance1	Yes	No Action
Hostname	finance2	Yes	Lock
Hostname	emalgw1	Yes	Terminate
IP address	192.168.1.55	Yes	Terminate

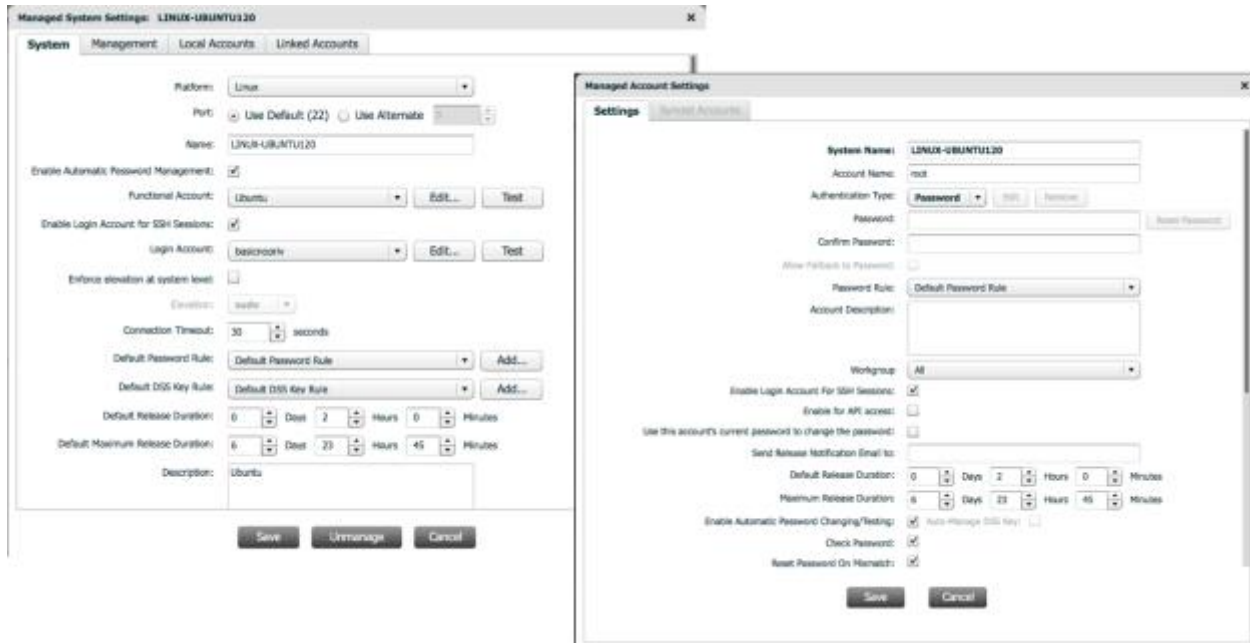
Connection Profiles are a set of discrete rules that may be applied to specific access policies. For example, a firecall admin accessing a set of privileged accounts from a remote location overnight may have a different command profile than if the same admin logged in during daylight hours from an office location.

- **Real-time Activity Alerts** – you can send email notifications to a range of email addresses based upon keyword, hostname, or IP address.
- **Command Blacklisting** – keywords and simple regex values may be defined to determine a specific course of action: Block command, Lock Session, Block and Lock Session, or Terminate Session
- **Hostname or IP Address Monitoring** – upon accessing defined system names / addresses, actions may be set to automatically Lock Session, or Terminate Session.

## Utilize Login Accounts in Restricted Shell Access Environments

As a security measure, many organizations restrict shell access to the root account in order to limit remote access to privileged accounts. In this type of scenario, a user would normally logon as a non-privileged account, and then 'su' to the root account.

PowerBroker Password Safe version 6.2 now supports environments that restrict shell access to root by adding Login Account capability.



When a session is opened to a managed root or other privileged account, the Login Account is used transparently in the background to open the remote shell session to the host, and an 'su' is made to the managed account automatically.



## Additional Enhancements

---

PowerBroker Password Safe version 6.2 also includes the following enhancements to further improve usability:

### Authentication/Authorization

- Enhanced SAML protocol support
- Support for AD binds at DC level
- Support for AD groups not in logon domain
- ITSM ticket support for JIRA

### Platforms

- Custom platform – alternate test option
- Clone/Editing of built in platforms

### Asset/Account Management

- Improved SSH key enumeration
- Database user enumeration
- Database instance enumeration
- Support for password management of AD accounts with different UPN suffix
- Workgroup support (multi-tenancy)
- Scheduled Task enumeration

### Smart Rules

- Addition of Max Concurrent Password Requests
- New Password Age filters
- New Email action for Managed Accounts

### Session Management Enhancements

- Snapshot feature for exporting frames to jpeg
- DirectConnect – performance improvements
- Application name in RDP window title
- DirectConnect – Remove dependency on API enabled account
- Keystroke search of active sessions
- SSH DirectConnect – Approvals and enhanced feedback (Jan)

## API Enhancements

- Performance improvements
- psrun v2 with API program factors
- 2-Factor Auth Support
- Approvals Support
- API Samples Library (?)
- Various enhancements

## About BeyondTrust

BeyondTrust® is a global security company that believes preventing data breaches requires the right visibility to enable control over internal and external risks.

We give you the visibility to confidently reduce risks and the control to take proactive, informed action against data breach threats. And because threats can come from anywhere, we built a [platform](#) that unifies the most effective technologies for addressing both internal and external risk: [Privileged Account Management](#) and [Vulnerability Management](#). Our solutions grow with your needs, making sure you maintain control no matter where your organization goes.

BeyondTrust's security solutions are trusted by over 4,000 customers worldwide, including over half of the Fortune 100. To learn more about BeyondTrust, please visit [www.beyondtrust.com](http://www.beyondtrust.com).