



BeyondTrust

Privileged Remote Access 18.3 What's New

Table of Contents

Updates for Administrators	3
Command Filtering	4
BeyondTrust Vault	5
Updates for Users	6
Enhanced Credential Selection	7
RDP Resolution Console Setting	8
Windows 10 Privacy Screen	9

Updates for Administrators

BeyondTrust Privileged Remote Access 18.3 contains the following updates for BeyondTrust administration.

Feature

Command Filtering

Protect against common user mistakes during SSH sessions by applying basic filtering to the input at the command line. For devices or appliances where agents are not practical or possible, command filtering provides an extra layer of control for administrators who need to provide access to that endpoint.

BeyondTrust Vault

Completely redesigned, BeyondTrust Vault is now an integrated credential store that enables your users to access privileged credentials and inject them directly into an endpoint. Eliminate the need for users to memorize or manually track passwords, increasing productivity and security. Manually enter privileged credentials into the Vault or try the built-in Discovery tool to automatically find and protect AD and local credentials.

Command Filtering

Protect against common user mistakes during SSH sessions by applying basic filtering to the input at the command line. For devices or appliances where agents are not practical or possible, command filtering provides an extra layer of control for administrators who need to provide access to that endpoint.

Shell Jump Filtering

Recognized Shell Prompts

Enter regular expressions, one per line, that will match against the command shell prompts found on your endpoint systems. A regular expression should only attempt to match the final line of a multi-line prompt.

```
switch#  
switch(config)#
```

Shell Prompt Matching Validation

Enter an existing endpoint's shell prompt, and the output will indicate whether it matches any regular expression in the list. This functionality will let you test your regular expressions without starting a session.

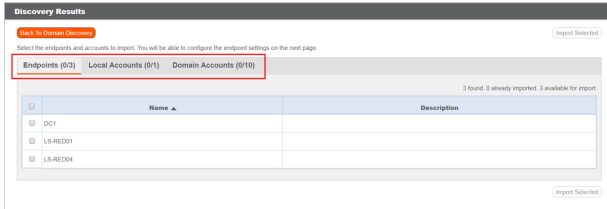
Shell Prompt:

Related Pages:

- [Use Shell Jump to Access a Remote Network Device](#)
- [Jumpoint: Set Up Unattended Access to a Network](#)
- [Session Policies: Set Session Permission and Prompting Rules](#)
- [Shell Jump Shortcuts](#)

BeyondTrust Vault

Completely redesigned, BeyondTrust Vault is now an integrated credential store that enables your users to access privileged credentials and inject them directly into an endpoint. Eliminate the need for users to memorize or manually track passwords, increasing productivity and security. Manually enter privileged credentials into the Vault or try the built-in Discovery tool to automatically find and protect AD and local credentials.



Related Pages:

- [Vault: Report on Vault Account and User Activity](#)
- [Vault for Privileged Remote Access](#)
- [BeyondTrust Vault Whitepaper](#)

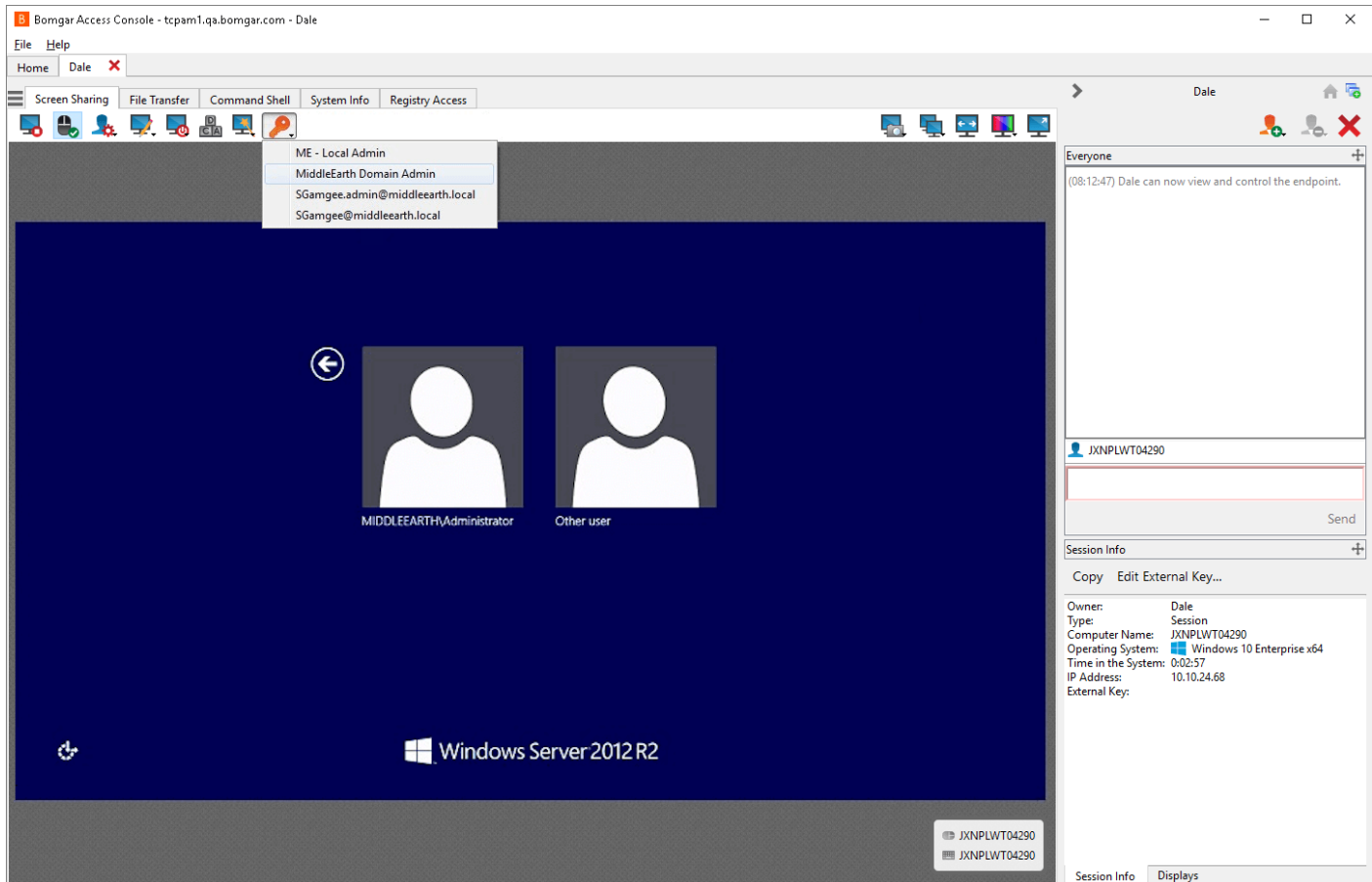
Updates for Users

BeyondTrust Privileged Remote Access 18.3 contains the following updates for BeyondTrust users.

Feature
Enhanced Credential Selection Get into sessions faster when BeyondTrust recommends the right credential for the user and endpoint. For those leveraging privileged credential injection, BeyondTrust can now recommend the most likely credential based on the usage history for the endpoint and list of accounts to which a user has access.
RDP Resolution Console Setting Start an RDP session with your specific screen size. Instead of defining the resolution of an RDP endpoint within the Jump Item, this is now a user console setting allowing each user to connect with the resolution best suited for their working environment.
Windows 10 Privacy Screen Privacy Screen helps prevent data leak by blanking the physical screen for endpoints that may have a monitor attached. Privacy screen support during a BeyondTrust session has been extended to Windows 10 endpoints.

Enhanced Credential Selection

Get into sessions faster when BeyondTrust recommends the right credential for the user and endpoint. For those leveraging privileged credential injection, BeyondTrust can now recommend the most likely credential based on the usage history for the endpoint and list of accounts to which a user has access.

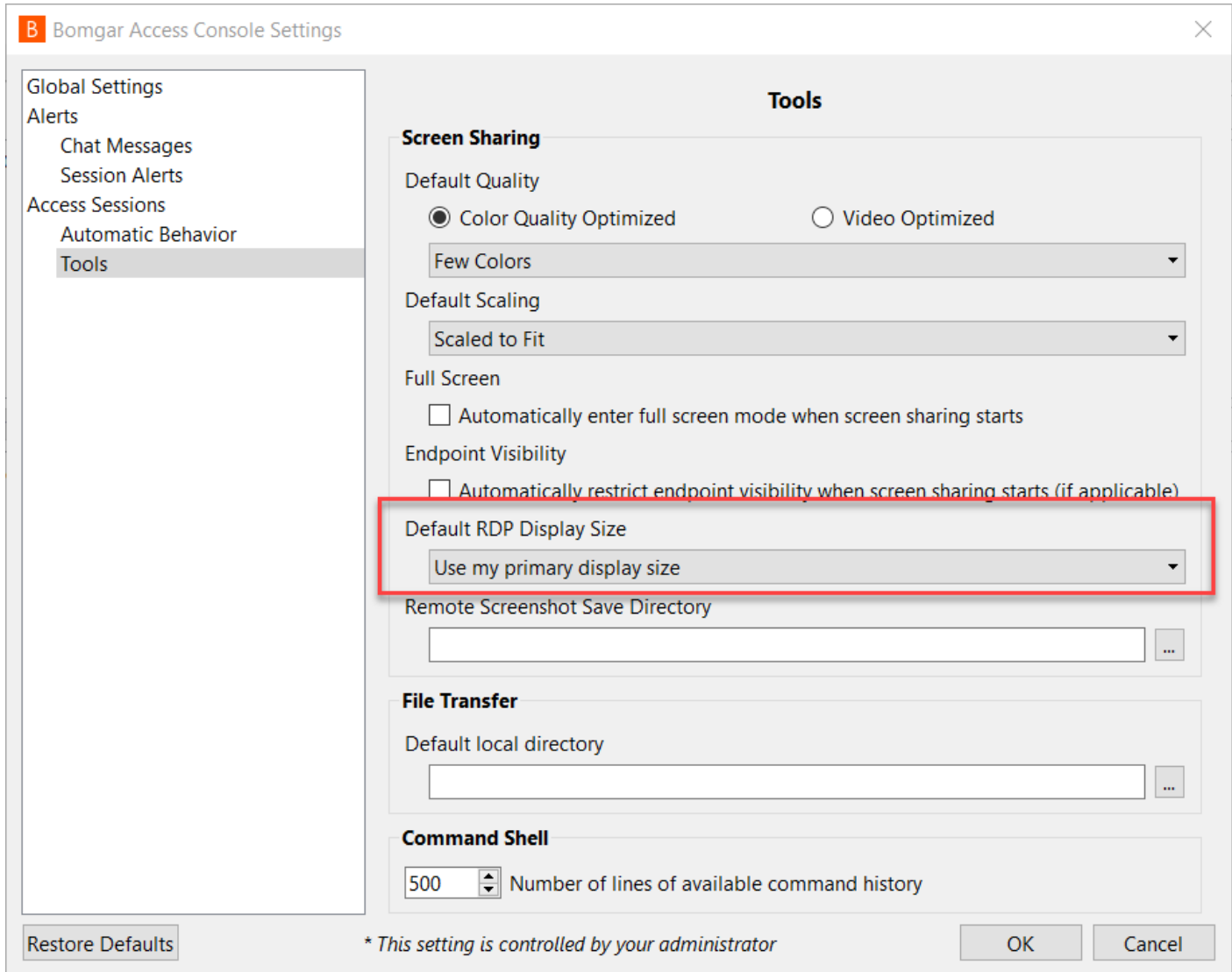


Related Pages:

- [Log Into Remote Systems Using Credential Injection from the Access Console](#)
- [Log into Endpoints Using Credential Injection in the Android Access Console](#)
- [Log into Endpoints Using Credential Injection from the iOS Access Console](#)
- [Log Into Endpoints Using Credential Injection](#)

RDP Resolution Console Setting

Start an RDP session with your specific screen size. Instead of defining the resolution of an RDP endpoint within the Jump Item, this is now a user console setting allowing each user to connect with the resolution best suited for their working environment.



Bomgar Access Console Settings

Tools

Screen Sharing

Default Quality
 Color Quality Optimized Video Optimized

Few Colors

Default Scaling
 Scaled to Fit

Full Screen
 Automatically enter full screen mode when screen sharing starts

Endpoint Visibility
 Automatically restrict endpoint visibility when screen sharing starts (if applicable)

Default RDP Display Size
 Use my primary display size

Remote Screenshot Save Directory

File Transfer

Default local directory

Command Shell

500 Number of lines of available command history

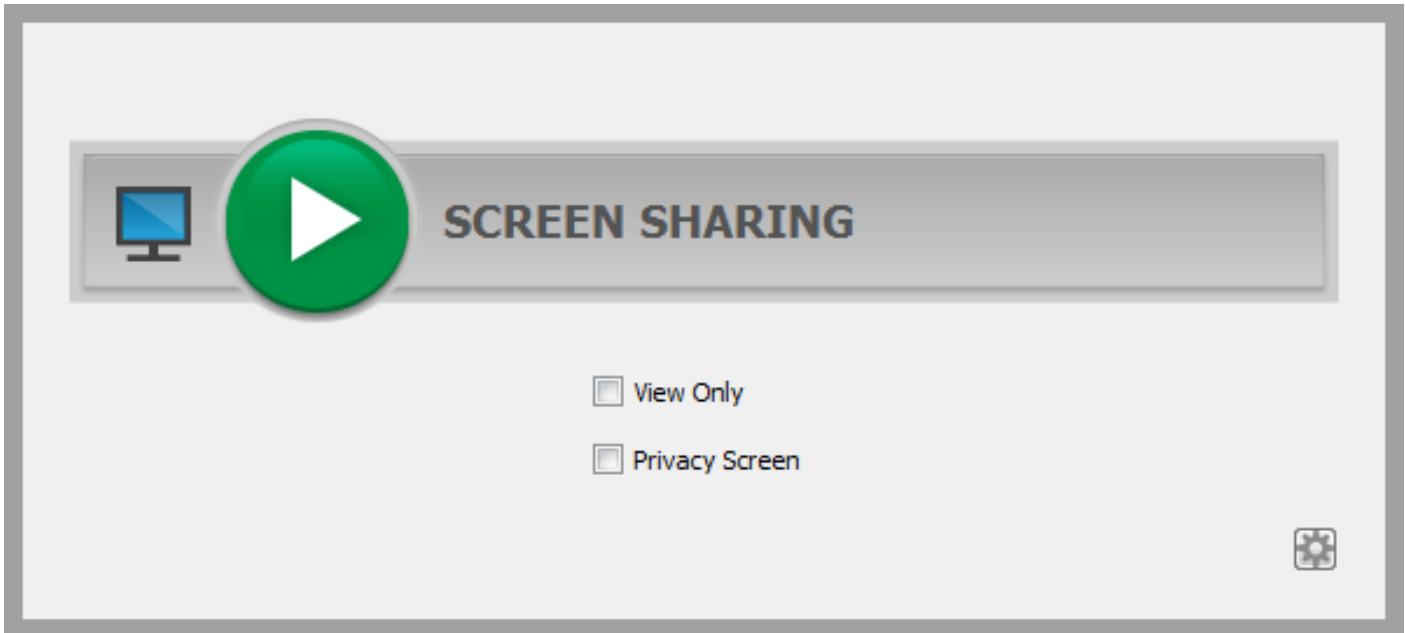
Restore Defaults * This setting is controlled by your administrator OK Cancel

Related Pages:

- [Change Settings and Preferences in the Access Console](#)
- [RDP to a Remote Windows System](#)
- [Jump Items: Mass Import Jump Shortcuts and Manage Jump Item Settings](#)
- [Remote Desktop Protocol Shortcuts](#)

Windows 10 Privacy Screen

Privacy Screen helps prevent data leak by blanking the physical screen for endpoints that may have a monitor attached. Privacy screen support during a BeyondTrust session has been extended to Windows 10 endpoints.



Related pages:

- [Control the Remote Endpoint with Screen Sharing](#)
- [Control the Remote Endpoint with Screen Sharing Using Privileged Web](#)
- [Screen Share with the Endpoint from the Android Access Console](#)
- [Screen Share with an Endpoint from the iOS Access Console](#)