

Privilege Management for Windows & Mac Cloud 21.3

New and Updated Features – April 20, 2021

BeyondTrust Privilege Management for Windows & Mac (PMWM) is a preventative endpoint security solution that removes excessive admin rights, applies modern application control, enables passwordless administration, and gives users just enough privileges to do their jobs and be productive. Available on-premises or via SaaS, the solution blocks malware and ransomware and protects against both external and internal threats. Utilizing QuickStart policies, organizations receive rapid time-to-value whether deploying the solution on-premises or via SaaS.

Privilege Management Cloud 21.3 improves user experience and includes SIEM integration.

Please see the [release notes](#) for additional details on these important enhancements.

New Feature Highlights – Privilege Management for Windows & Mac Cloud

All-New User Interface

PM Cloud 21.3 includes an all-new user interface, bringing the product up to date with the BeyondTrust brand and UI standards, improving usability.

Within this new UI, we have added a number of smaller features and enhancements to improve the user experience:

- Improved grid filtering.
- Customized grid column layouts are now saved between sessions.
- Improved configuration settings.
- Improved user roles layout and new permissions comparison screen.
- Improved Global Search.
- Many other tweaks and improvements.

SIEM Integration for Endpoint Event Data

For customers who require the ability to import data from their PM Cloud instance into their SIEM tool, PM Cloud 21.3 introduces SIEM Integration for Endpoint Event Data.

The first release of SIEM Integration allows the endpoint audit event data (considered the critical dataset for a SIEM tool) to be forwarded to an AWS S3 bucket belonging to the customer.

This allows numerous subsequent options for this data, including native integration with the majority of SIEM tools.

By taking this approach, PM Cloud offers a very modern and flexible approach to integrating endpoint audit event data into other tools, as S3 buckets are now a ubiquitous tool for these kinds of use cases. Connection to the S3 bucket is configured within the PM Cloud platform.

SIEM Settings

Enable SIEM Integration

S3 Plugin Configuration

Access Key ID

Secret Access Key

Bucket

Region




Server-Side Encryption

Compliance Dashboard Homepage

PM Cloud 21.3 allows customers to have at-a-glance information available to them in order to be able to properly respond to potential issues. Users can quickly and easily see if machines are on the wrong policy, potentially on out-of-date software, or due to deactivated. The three core areas include:

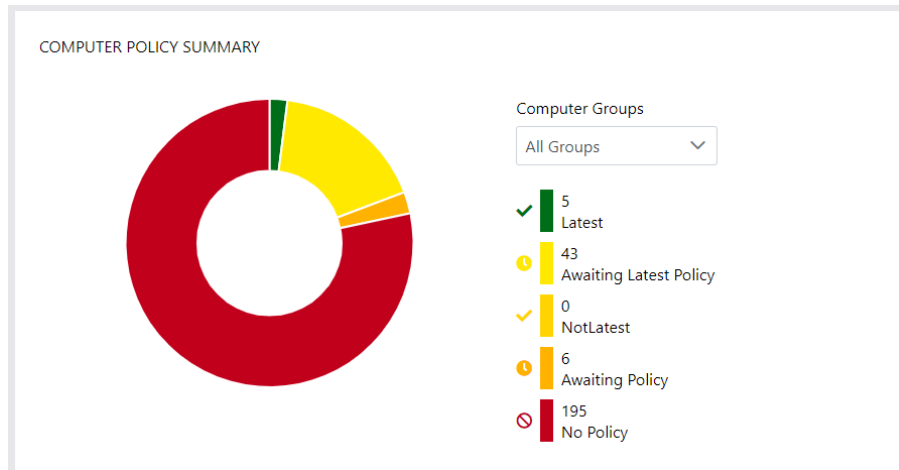
Computer Status Summary

Easily see authorized, pending, and soon-to-be deactivated computers:

	Computers Authorised	62
	Computers Pending Activation	59
	Computers Pending Deactivation	31

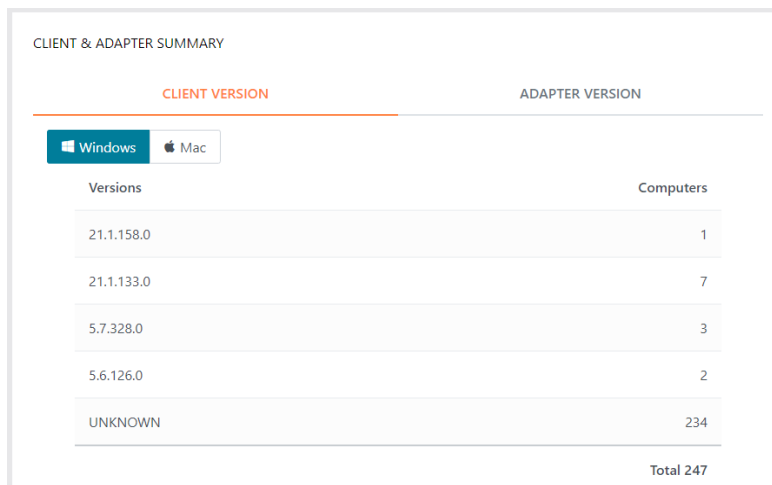
Computer Policy Summary

The policy summary allows rapid insight into whether or not endpoints are running the expected policy. View across all groups.



Client & Adapter Summary

Whether endpoints are running the correct client and adapter software can be challenging to discover. Our new summary makes it easy to establish this for both Windows and Mac computers:



CLIENT & ADAPTER SUMMARY

CLIENT VERSION | ADAPTER VERSION

Windows | Mac

Versions	Computers
21.1.158.0	1
21.1.133.0	7
5.7.328.0	3
5.6.126.0	2
UNKNOWN	234

Total 247

Web Policy Editor – Messaging v1

In this release, we added the ability for users to customize the messages their end users will see, delivering a great experience for end users.

The first release provides users with a list/preview page giving an at-a-glance preview for each message type:

MESSAGES

Filter by ▼

✔ **Allow Message (Authentication & Reason)** ⋮

Credentials Required

You are about to run the unapproved [PSI_PROD_TYPE] that requires authentication. If you are sure you want to proceed and have your system audited, please select a reason below. [PSI_PROD_NAME] [PSI_APP_GROUP]

Program Name [PSI_PROD_NAME]
 Program Publisher [PSI_PROD_PUBLISHER]
 Program Path [PSI_PROD_PATH]

Please provide a reason

MicrosoftAccountName
 Password

OK Cancel

Confirmation before elevating privileges, with reason and re-authentication

- Allow Message
- Will be shown on secure desktop
- Challenge Response: Not enabled
- User must authorize

✔ **Allow Message (Select Reason)** ⋮

Reason Required

You are about to run this unapproved [PSI_PROD_TYPE] that requires authentication. If you are sure you want to proceed and have your system audited, please select a reason below. [PSI_PROD_NAME] [PSI_APP_GROUP]

Program Name [PSI_PROD_NAME]
 Program Publisher [PSI_PROD_PUBLISHER]
 Program Path [PSI_PROD_PATH]

Please select a reason

SELECT A REASON

OK Cancel

Confirmation before elevating privileges, user must select reason

- Allow Message
- Will be shown on secure desktop
- Challenge Response: Not enabled
- No authorization

ALLOW MESSAGE (AUTHENTICATION & REASON)

Message Options ^

Show Message On Secure Desktop

Title Text
IT Security Policy

Header Type
Default ▼

Header Background Type
Custom Image ▼

Select Image
BeyondTrust Banner ▼

Show Header Text

Header Text
Credentials Required

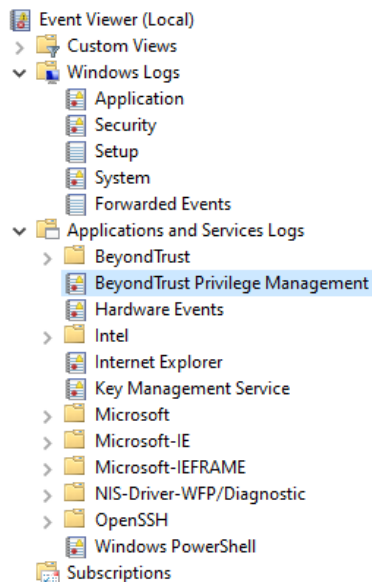
Header Text Color ▼

SAVE CHANGES

DISCARD CHANGES

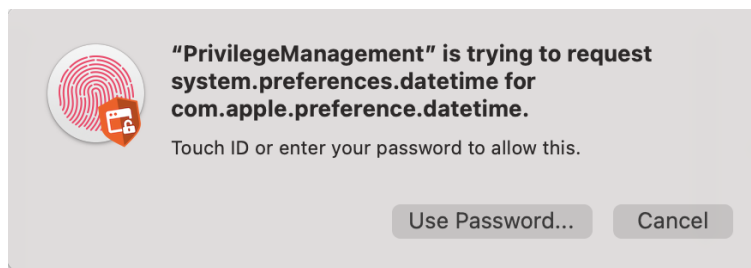
Custom BeyondTrust Event Log

Privilege Management customers who rely on raising events to the local Windows event log can now log PM events to a dedicated BeyondTrust event location as an alternative, to avoid saturation of the Application event log.



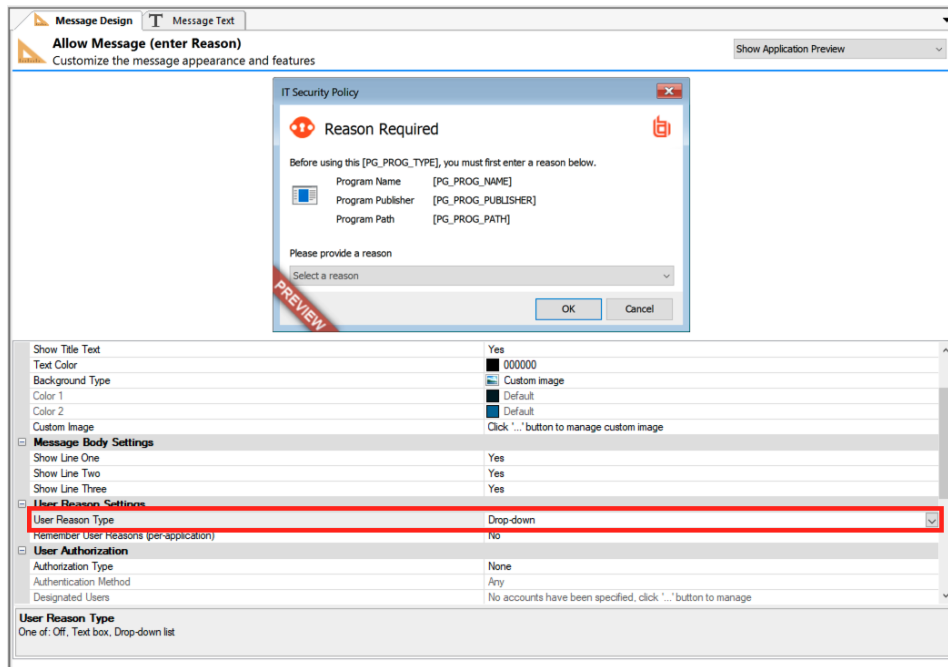
TouchID Support for Mac

Organizations that want to provide end users with a seamless and familiar experience can now do so with the introduction of TouchID support in end user messages. When users are prompted to authenticate prior to running an application, they can now use their TouchID-enabled device instead of a password to quickly authenticate themselves, as a faster and more convenient alternative to entering their password.



Message Dropdowns for PM Mac

For organizations that who require their users to provide justifications for 'why' certain applications are being used, this new feature lets users pick from a predefined list of reasons, as an alternative to typing out a reason. This not only gives users a more convenient way of submitting common reasons more quickly, but also helps administrators in analyzing reasons for using applications, with a consistent set of reasons to build reports from.



About BeyondTrust

BeyondTrust is the worldwide leader in Privileged Access Management (PAM), empowering organizations to secure and manage their entire universe of privileges. Our integrated products and platform offer the industry's most advanced PAM solution, enabling organizations to quickly shrink their attack surface across traditional, cloud, and hybrid environments.

The BeyondTrust Universal Privilege Management approach secures and protects privileges across passwords, endpoints, and access, giving organizations the visibility and control they need to reduce risk, achieve compliance, and boost operational performance. Our products enable the right level of privileges for just the time needed, creating a frictionless experience for users that enhances productivity.

With a heritage of innovation and a staunch commitment to customers, BeyondTrust solutions are easy to deploy, manage, and scale as businesses evolve. We are trusted by 20,000 customers, including 70 percent of the Fortune 500, and a global partner network. Learn more at www.beyondtrust.com.