

What's New in 23.1 PRA

What's New Documentation

Release Date – January 24, 2023

BeyondTrust Privileged Remote Access (PRA) empowers organizations to control, manage, and audit remote privileged access by authorized employees, contractors, vendors, developers, and cloud ops engineers without compromising security. Enforce least privilege and exert granular control and visibility over remote access while enabling user productivity.

With Privileged Remote Access, you can:

- Connect to any system, anywhere in the world.
- Define who can connect to what systems and when. Just-in-time, just-the-needed-access.
- Connect at both the console GUI level as well as proxy/tunnel protocols.
- Use the PRA console or local tools to work on remote infrastructure.
- Centralize the audit trail for all connections, including powerful protocol level auditing of SQL and SSH connections.

New for PRA 23.1, BeyondTrust is introducing Infrastructure Access Management. Traditional privileged access management (PAM) tools have not kept up with cloud use cases, and developers and cloud ops engineers are still using legacy connection methods like VPNs.

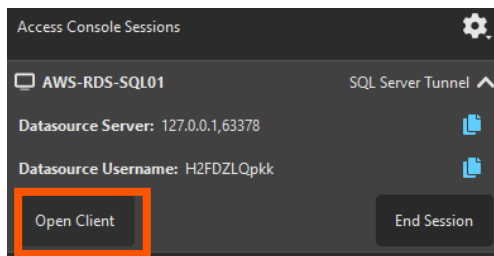
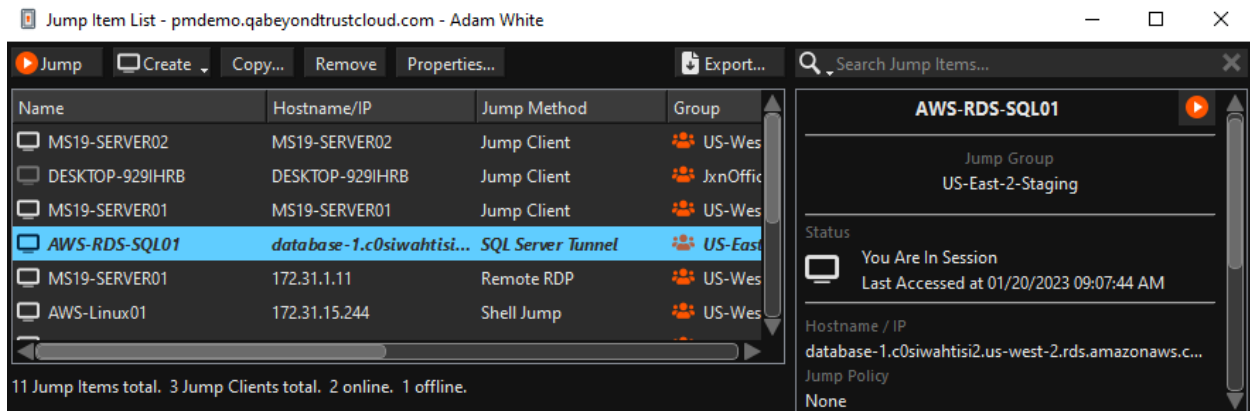
Infrastructure Access Management gives these users a frictionless user experience, the ability to use familiar local tools when connecting to critical systems, proxy the SQL protocol directly, and introduces infrastructure-as-code to provision/deprovision cloud systems and access to them, with a simple script. Incredibly powerful, completely auditable, and an evolved and modern access experience.

Release Highlights

Infrastructure Access Mode

This newly streamlined PRA interface simplifies the user's experience and gives them a simple path to the systems needed to do their jobs. Incredibly easy to use and intuitively placed in the system tray for easy access, it's intended to be present when needed, yet run minimized for a decluttered user experience. Users see only the systems they have been granted permissions to see, and admins can define that list according to user, groups, day/time, or a host of other attributes (RBAC and ABAC). When protocol-based connections are made, an "open client" option appears to allow local tools (like Putty

and Azure Data Studio) to be used. This feature maintains the user's desired workflow and creates an audit trail of these activities.



Automatic Cloud Provisioning

In PRA 23.1, users and admins with appropriate permissions can now use prebuilt scripts that enable automation use cases. An example would be the need to replicate a customer's environment and using our prebuilt script (in Terraform, for example) to spin up servers in AWS or Azure and automatically provisioning access to those systems via PRA. The opposite works as well, where access to systems can be revoked and the systems can be deprovisioned automatically.

BYOT Database Proxy

PRA 23.1 can now directly proxy the Microsoft SQL Server protocol. This allows secure connections to databases and the use of local tools to conduct the actual work on the system. Credentials can be injected upon session start to further improve security. A full audit trail will be created, and because the connection happens at the protocol level, there's an impressive amount of auditing available. This functionality can be found in the new "Database Tunneling" section in /login under Protocol Tunnel Jump Items.

SSH Interactive Prompting

SSH sessions are heavily used by developers and cloud ops engineers when connecting to remote systems. With PRA 23.1, SSH sessions can now support in-line multi-factor prompts following the user authentication. This functionality accounts for

more environmental variables than before and further enhances the security of using PRA for SSH connections across the enterprise.

API – CLI Tool

In PRA 23.1, a new command line interface (CLI) tool provides a simpler method to leverage and interact with the available Configuration APIs. This new tool makes it easier to integrate your PRA instance with cloud environments or other infrastructure. In PRA 23.1, this documentation is available in the API Management section of /login.

File Transfer Scanning Integration

You asked and we listened. As of PRA 23.1, BeyondTrust appliances can now integrate with an ICAP server for in-transit file scanning. The in-session file transfer capability is a heavily used feature among our customers. This ability to integrate with ICAP, and further align PRA capabilities with security infrastructures adds an important layer of security that builds on the existing audit capabilities.

Enhancement: RDP Jump Item Association

PRA 23.1 improves security and the user experience when accessing non-domain linked endpoints via RDP. This new functionality allows administrators to directly associate non-domain linked accounts that were discovered via Jump Clients, to RDP Jump Items for that endpoint. The associated API functionality for this feature is also available, allowing administrators to scale and automate the associated administrative tasks more easily.

Enhancement: Auto-Update Process for Hardened Linux

When the client downloads an update from our appliance, the updated installer is downloaded to the /tmp directory. In our hardened images, that directory is mounted with the noexec flag. This prevents any binaries in that directory from executing. This is a common practice to prevent malware from anchoring to a default location with execution permissions. Prior to PRA 23.1, this dynamic caused the update installer to fail.

In PRA 23.1, during the update process, clients now download the update to their own install location and begin the update from there. By executing from the same location, the proper permissions are already in place, and this allows the update process for hardened Linux systems to be more seamless for PRA administrators.

About BeyondTrust

BeyondTrust is the worldwide leader in intelligent identity and access security, empowering organizations to protect identities, stop threats, and deliver dynamic access to empower and secure a work-from-anywhere world. Our integrated products and

platform offer the industry's most advanced privileged access management (PAM) solution, enabling organizations to quickly shrink their attack surface across traditional, cloud, and hybrid environments.

BeyondTrust protects all privileged identities, access, and endpoints across your IT environment from security threats, while creating a superior user experience and operational efficiencies. With a heritage of innovation and a staunch commitment to customers, BeyondTrust solutions are easy to deploy, manage, and scale as businesses evolve. We are trusted by 20,000 customers, including 75 of the Fortune 100, and a global partner network. Learn more at www.beyondtrust.com.