

EPM Linux 22.3

What's New Documentation

Release Date – December 8, 2022

EPM Linux is an enterprise-class endpoint privilege management suite for Unix and Linux, which encompasses three products as follows:

- 1- BeyondTrust Privilege Management for Unix & Linux (PMUL) is a privilege management solution that helps security and IT organizations achieve compliance, control privileged access, and prevent and contain breaches that can affect Unix and Linux systems — without hurting productivity.
- 2- BeyondTrust Active Directory Bridge (ADB) centralizes authentication for Unix and Linux environments by extending Active Directory's Kerberos authentication and single sign-on capabilities to these platforms. By extending Group Policy to non-Windows platforms, BeyondTrust provides centralized configuration management, reducing the risk and complexity of managing a heterogeneous environment.
- 3- The Unix/Linux Management Platform (BIUL) is the industry's most innovative and comprehensive privileged access management platform. The platform maximizes visibility, simplifies deployment, automates tasks, improves security, and reduces privilege-related risks.

In this release we are introducing new features and exciting improvements to BeyondTrust's best-in-class EPM for Unix and Linux solution.

Please see the [release notes](#) for additional details on these important enhancements.

Release Highlights:

- PMUL 22.3

PMUL for Linux desktops (aka Sudo Manager) (initially released in v22.2): This new feature helps administrators to improve organizational security posture with granular control over their Linux workstations by integrating native Sudo management into PMUL to centrally manage Sudo policies.

Supports Linux desktop platforms only (RHEL 7.x & 8.x workstation and Ubuntu 20.04 & 22.04 Workstation.)

Better Licensing report usage: we now provide our customers with an easier way to produce a license usage report for PMUL, which replaces the command line used to produce a screen output.

- ADB 22.3

Hybrid Azure AD: Users may now authenticate to an Azure AD tenant in addition to Active Directory.

- BIUL 22.3

Productize Kibana Dashboards: We have expanded on the integration with Elastic, by adding the Kibana visualizations to BIUL for PMUL, ADB, and BIUL.

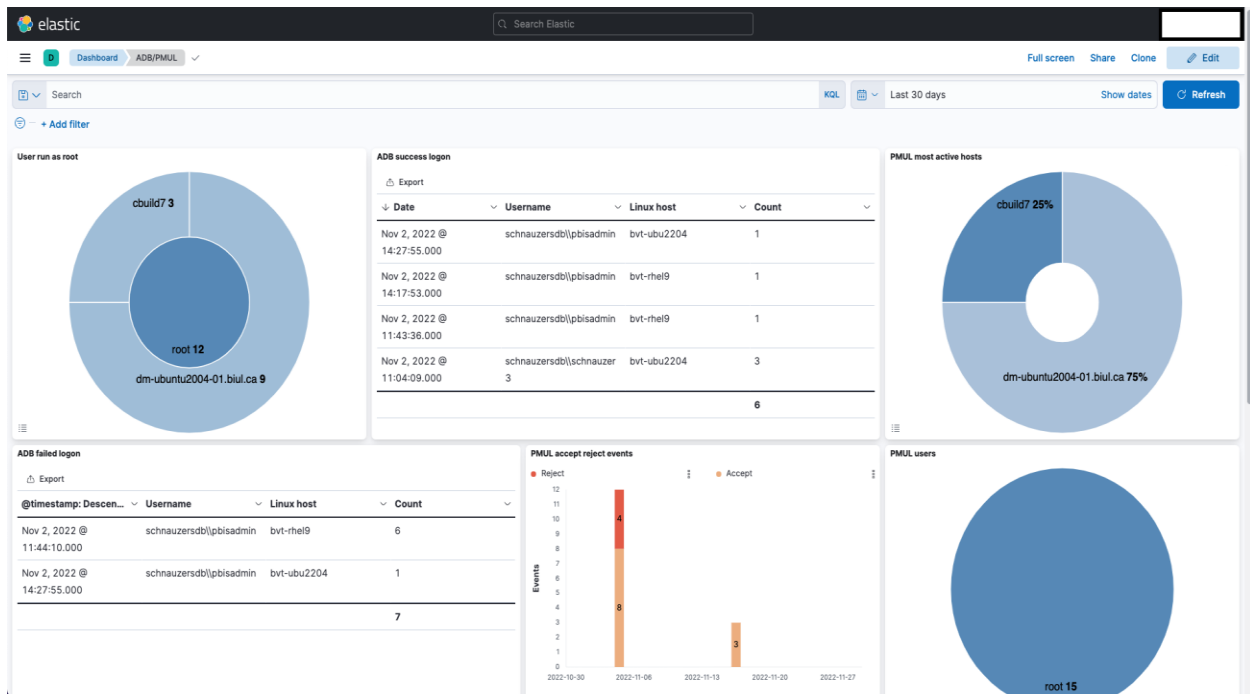


Figure 1 – Example of Kibana Dashboards

Add script support: BIUL user passwords have historically been hashed using the bcrypt algorithm. **script** is a successor to **bcrypt** that is more computationally intensive, more configurable, and designed to be more resistant to the use of custom hardware in brute-force attacks.



About BeyondTrust

BeyondTrust is the worldwide leader in intelligent identity and access security, empowering organizations to protect identities, stop threats, and deliver dynamic access to empower and secure a work-from-anywhere world. Our integrated products and platform offer the industry's most advanced privileged access management (PAM) solution, enabling organizations to quickly shrink their attack surface across traditional, cloud, and hybrid environments.

BeyondTrust protects all privileged identities, access, and endpoints across your IT environment from security threats, while creating a superior user experience and operational efficiencies. With a heritage of innovation and a staunch commitment to customers, BeyondTrust solutions are easy to deploy, manage, and scale as businesses evolve. We are trusted by 20,000 customers, including 75 of the Fortune 100, and a global partner network. Learn more at www.beyondtrust.com.